

PERFORMANCE

Processor
Intel® Core™ i5-10500T (6C / 12T, 2.3 / 3.8GHz, 12MB)

Graphics
Integrated Intel UHD Graphics 630

Chipset
Intel Q470 Chipset

Memory
1x 16GB SO-DIMM DDR4-2666

Memory Slots
Two DDR4 SO-DIMM slots, dual-channel capable

Max Memory
Up to 64GB DDR4-2933

Storage
1x 512GB SSD M.2 2280 PCIe 3.0x4 NVMe Opal

Optane™ Memory
None

Storage Support
Up to two drives, 1x 2.5" HDD + 1x M.2 2242/2280 SSD

- 2.5" HDD up to 1TB
- M.2 SSD up to 2TB
- Optional Intel Optane Memory, M.2

Card Reader
Not configured

Optical
None

Audio Chip
High Definition (HD) Audio, Realtek® ALC233VB codec

Speakers
1.5Wx1

Power Supply
65W 89% Adapter

DESIGN

Keyboard
USB Traditional Keyboard, Black, German

Mouse
USB Calliope Mouse, Black

Expansion Slots
Two M.2 slots (one for WLAN, one for SSD)

Case Color
Black

Stand
None

Adapter Cage
None

Toolless Chassis Screw
Toolless Chassis Screw

Dust Filter
None

VESA Mount
VESA Mount

Form Factor
Tiny (1L)

Dimensions (WxDxH)
179 x 183 x 34.5 / 37 mm with rubber feet (7.05 x 7.2 x 1.36 / 1.5 inches with rubber feet)

Weight

Models	Weight
Tiny only	1.25 kg (2.76 lbs)
With VESA mount & ODD box	1.74 kg (3.84 lbs)

CONNECTIVITY

Ethernet
Integrated 100/1000M

WLAN + Bluetooth™
Intel AX201 11ax, 2x2 + BT5.1, vPro

Front Ports

- 1x USB 3.2 Gen 2 (Always On and fast charge)
- 1x USB-C 3.2 Gen 1
- 1x headphone / microphone combo jack (3.5mm)

Optional Front Ports
None

Rear Ports

- 2x USB 3.2 Gen 1
- 2x USB 3.2 Gen 2
- 1x Ethernet (RJ-45)
- 1x HDMI®
- 1x DisplayPort™

Optional Rear Ports
1x Serial + 1x DP

Monitor Cable
None

SECURITY & PRIVACY

Kensington® Cable Lock
None

Chassis Intrusion Switch
Chassis Intrusion Switch

MANAGEABILITY

System Management
Intel® vPro, DASH

SERVICE

Base Warranty
3-year, Onsite

Included Upgrade
None

CERTIFICATIONS

Green Certifications

- EPEAT™ Silver
- ENERGY STAR® 8.0
- ErP Lot 3
- TCO Certified 8.0
- RoHS

Mil-Spec Test
MIL-STD-810H military test passed (Low Pressure [Altitude], High Temperature, Low Temperature, Temperature Shock, Humidity, Sand and Dust, Vibration, Shock, Fungus, Solar Radiation)

SOFTWARE

Operating System
Windows® 10 Pro 64, German

Bundled Software
None

MODEL

TopSeller	: Yes	Announce Date	: 2020-05-12
EAN / UPC / JAN	: 0194778962315	End of Support	: 2026-12-14

Security Chip

Discrete TPM 2.0, TCG certified

Fingerprint Reader

Not configured

Physical Locks

Kensington® Security Slot

The product image is a sample, it may not match the real color of this model

For a full list of this model's configurations and device specifications, please visit: <https://psref.Lenovo.com>

Premier Support - A direct 24x7x365 line to our most elite technicians.



Advanced technical support, 24x7x365, in more than 100 markets



Technical Account Managers for proactive relationship and escalation management



Comprehensive hardware & OEM software support



Priority on service delivery and repair parts



Single point of contact for simplified end-to-end case management



Lenovo Service Connect Portal for customized reporting and product support

Accidental Damage Protection - Protection of your PC from the unexpected.

Experience shows that a significant portion of devices may be damaged (and not covered under warranty) in the first three years. Lenovo's Accidental Damage Protection service covers accidents beyond the system warranty such as drops, spills, bumps and even electrical surges. Make sure your new device has maximum protection, avoid unplanned costs and get peace of mind.

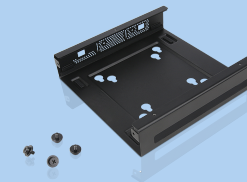
Base Warranty - Included with the systems you purchase, default 1- or 3-year coverage window.

Warranty Extensions & Upgrades - Service and protection that's right for your circumstances.

- Pick Up & Return Courier
- Onsite Support
- Technician Installed Customer
- Replaceable Unit Service
- International Warranty Upgrade

Lenovo may not offer the products, services or features discussed in this document in all regions. Lenovo may withdraw an offering at any time. Information is subject to change without notice. Consult your local representative for information on offerings available in your area. Lenovo reserves the right to change specifications or other product information without notice. Lenovo is not responsible for photographic or typographical errors. Lenovo provides this publication "as is" without warranty of any kind, either express or implied, including the implied warranties of merchantability or fitness for a particular purpose.

Recommended Accessories



ThinkCentre Tiny VESA Mount II

4XFON03161

The ThinkCentre Tiny VESA Mount II is a unique design specific to house the Tiny PC while featuring the universal VESA mount configuration. The VESA standard enables this mount to attach to anything that is VESA comp...

Recommended Services

BEST	-
BETTER	4Y Premier Support Upgrade from 3Y Onsite (5WSOT36207)
GOOD	3Y Premier Support Upgrade from 3Y Onsite (5WSOU26647)

For a full list of accessories and services, please visit:
<https://smartfind.Lenovo.com>



PSREF
Product Specifications
Reference