

PERFORMANCE

**Processor**  
AMD Ryzen™ 5 PRO 6650U (6C / 12T, 2.9 / 4.5GHz, 3MB L2 / 16MB L3)

**Graphics**  
Integrated AMD Radeon™ 660M Graphics

**Chipset**  
AMD SoC Platform

**Memory**  
16GB Soldered LPDDR5-6400

**Memory Slots**  
Memory soldered to systemboard, no slots, dual-channel

**Max Memory**  
16GB soldered memory, not upgradable

**Storage**  
512GB SSD M.2 2280 PCIe® Gen 4x4 Value NVMe® Opal2

**Storage Support**  
One drive, up to 2TB M.2 2280 SSD

**Storage Slot**  
One M.2 2280 PCIe Gen 4x4 slot, supports M.2 2280 SSD

**Audio Chip**  
High Definition (HD) Audio, Realtek® ALC3287 codec

**Speakers**  
Stereo speakers, 2W x2, Dolby® Audio™

**Camera**  
IR & FHD 1080p with Privacy Shutter

**Microphone**  
2x, Array

**Battery**  
Integrated 52.5Wh

**Power Adapter**  
65W USB-C® (3-pin)

DESIGN

**Display**  
16" WUXGA (1920x1200) Low Power IPS 400nits Anti-glare, 100% sRGB, Low Blue Light, TUV Eye Comfort

**Touchscreen**  
None

**Color Calibration**  
ICC Template Color Calibration

**Keyboard**  
Backlit, German

**Case Color**  
Black

**Case Material**  
PC 50% GF + PC 20% CF (Top), PPS (Bottom)

**Dimensions (WxDxH)**  
361.98 x 255.5 x 20.5 mm (14.25 x 10.06 x 0.81 inches)

**Weight**

| Models                 | Weight                          |
|------------------------|---------------------------------|
| Model with black cover | Starting at 1.734 kg (3.82 lbs) |
| Model with grey cover  | Starting at 1.779 kg (3.92 lbs) |

SOFTWARE

**Operating System**  
Windows® 11 DG Windows 10 Pro 64, German

**Bundled Software**  
None

CONNECTIVITY

**Onboard Ethernet**  
Integrated 100/1000M, AMD Pro

**WLAN + Bluetooth®**  
Qualcomm® NFA725A Wi-Fi® 6E, 11ax, 2x2 + BT5.2

**WWAN**  
WWAN Upgradable to 4G

**SIM Card**  
None

**NFC**  
None

**Standard Ports**

- 2x USB 3.2 Gen 1 (one Always On)
- 2x USB-C 3.2 Gen 2 (support data transfer, Power Delivery and DisplayPort™ 1.4)
- 1x HDMI®, up to 4K/60Hz
- 1x Ethernet (RJ-45)
- 1x Headphone / microphone combo jack (3.5mm)
- 1x Security keyhole

**Optional Ports (configured)**

- 1x Smart card reader
- 1x Nano-SIM card slot (WWAN support models)

**Docking**  
Various docking solutions supported via USB-C.  
For more compatible docking solutions, please visit [Docking](#)

[for ThinkPad P16s Gen 1 \(AMD\)](#)

**Monitor Cable**  
None

· Lenovo reserves the right to change specifications or other product information without notice.  
· Product image on this page is a sample, it may not match the real color of this model.  
· Battery life is an estimated maximum. Actual battery life may vary based on many factors, including screen brightness, active applications, features, power management settings, battery age and conditioning, and other customer preferences

SECURITY & PRIVACY

**Smart Card Reader**  
Smart Card Reader

**Security Chip**  
Discrete TPM 2.0

**Fingerprint Reader**  
Integrated in Power Button

**Physical Locks**  
Kensington® Nano Security Slot, 2.5 x 6 mm

**Other Security**  
IR camera for Windows® Hello

MANAGEABILITY

**System Management**  
AMD Pro Manageability

SERVICE

**Base Warranty**  
3-year, Depot

**Included Upgrade**  
1Y Premier Support from 3Y Depot Windchill bundles (CPN) (5WS1B68729)

ACCESSORIES

**Bundled Accessories**  
None

CERTIFICATIONS

**Green Certifications**

- EPEAT™ Gold
- ENERGY STAR® 8.0
- TCO Certified 9.0
- RoHS compliant

**Other Certifications**  
TÜV Rheinland® Eye Comfort Certification

**Mil-Spec Test**  
MIL-STD-810H military test passed

**ISV Certifications**  
Please visit [ISV certifications for Lenovo® Workstations](#)

MODEL

|                        |                 |                       |              |
|------------------------|-----------------|-----------------------|--------------|
| <b>TopSeller</b>       | : Yes           | <b>Announce Date</b>  | : 2022-07-19 |
| <b>EAN / UPC / JAN</b> | : 0196801287334 | <b>End of Support</b> | : N/A        |

## Premier Support - A direct 24x7x365 line to our most elite technicians.



Advanced technical support, 24x7x365, in more than 100 markets



Technical Account Managers for proactive relationship and escalation management



Comprehensive hardware & OEM software support



Priority on service delivery and repair parts



Single point of contact for simplified end-to-end case management



Lenovo Service Connect Portal for customized reporting and product support

## Accidental Damage Protection - Protection of your PC from the unexpected.

Experience shows that a significant portion of devices may be damaged (and not covered under warranty) in the first three years. Lenovo's Accidental Damage Protection service covers accidents beyond the system warranty such as drops, spills, bumps and even electrical surges. Make sure your new device has maximum protection, avoid unplanned costs and get peace of mind.

## Base Warranty - Included with the systems you purchase, default 1- or 3-year coverage window.

## Warranty Extensions & Upgrades - Service and protection that's right for your circumstances.

- Pick Up & Return Courier
- Onsite Support
- Technician Installed Customer
- Replaceable Unit Service
- International Warranty Upgrade

Lenovo may not offer the products, services or features discussed in this document in all regions. Lenovo may withdraw an offering at any time. Information is subject to change without notice. Consult your local representative for information on offerings available in your area. Lenovo reserves the right to change specifications or other product information without notice. Lenovo is not responsible for photographic or typographical errors. Lenovo provides this publication "as is" without warranty of any kind, either express or implied, including the implied warranties of merchantability or fitness for a particular purpose.

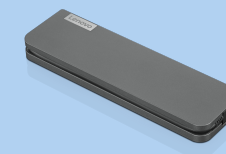
## Recommended Accessories



### ThinkPad USB-C Dock Gen 2

40AS0090US

- Lenovo understands that modern business depends on a wide variety of PC's and even brands to meet their business needs. To make this easier Lenovo USB-C dock is compatible with Lenovo notebooks as well as note...



### Lenovo USB-C Mini Dock\_US

40AU0065US

Expand Your Potential with An Universal Mini Dock; Lenovo understands that modern business depends on a wide variety of PC's and even brands to meet their business needs. To make this easier Lenovo USB-C Mini dock is ...

For a full list of accessories and services, please visit:  
<https://smartfind.Lenovo.com>

**Lenovo**

**PSREF**  
Product Specifications  
Reference